

REFRACTOMETERS AND POLARIMETERS

Hand and bench refractometers and polarimeters



Refractometers and polarimeters

Hand Refractometers

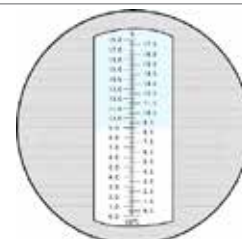


HR-110 Hand refractometer, 0-18%

Measuring range: 0-18% Brix

Resolution: 0.1% Brix

Without ATC

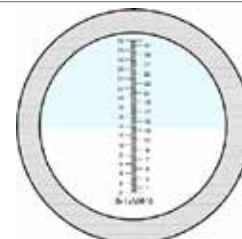


HR-120 Hand refractometer, 0-32%

Measuring range: 0-32% Brix

Resolution: 0.2% Brix

Without ATC



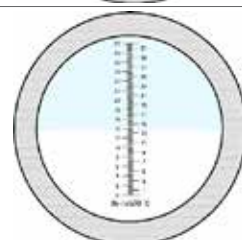
HR-130 Hand refractometer, 0-32% ATC

Measuring range: 0-32% Brix

Resolution: 0.2% Brix

With ATC

Compensation temperature range: 10°C-30°C

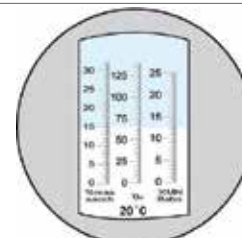


HR-140 Hand refractometer, 0-32% ATC, triple scale

Measuring range: 0-32% Brix, 0-140° OE (Oechsle), 0-40° Babo (KMN)

Resolution: 0.2% Brix, 1% OE, 0.2° Babo

With ATC

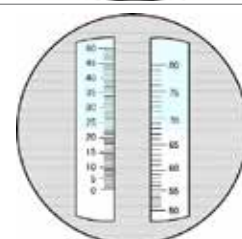


HR-150 Hand refractometer, 0-80%, double scale

Measuring range: 0-80% Brix

Resolution: 1% Brix

Without ATC



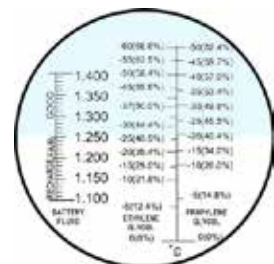
HR-160 Hand refractometer for urine and proteine

Measuring range: Serum Protein 0-12g/dl, Specific Gravity 1.000-1.050sg,
Refractive Index: 1.330RI-1.360RI
Resolution: Serum Protein 0.2g/dl, Specific Gravity 0.005sg, Refractive Index 0.0005RI.
Without ATC



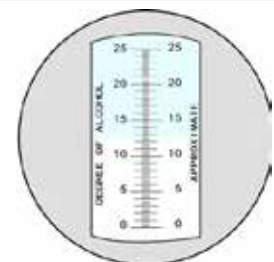
HR-170 Hand refractometer, for battery, antifreeze

Measuring range: Ethylene Glycol -60°C (66.6%)-0°C (0%),
Propylene Glycol, -50°C(62.4%)-0°C (0%),
Battery 1.100-1.400sg
Resolution: Ethylene Glycol 5°C, Propylene Glycol 5°C, Battery 0.01sg. Without ATC



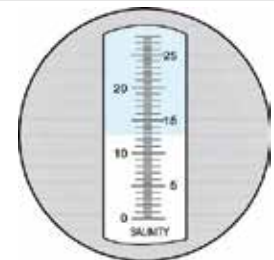
HR-180 Hand refractometer for wine and grape

Measuring range: Alcohol° 0-25%
Resolution: Alcohol° 0.2%. Without ATC



HR-190 Hand refractometer, 0-28%, for salinity

Measuring range: Salinity: 0-28%
Resolution: Salinity: 0.2%. With ATC.
Compensation temperature range: 10°C-30°C



HRD-300 Digital refractometer 0-45%,

Brix Measuring range: 0-45% Brix Resolution: 0.1% Brix
Automatic Temperature Compensation. Temperature range: 0-40°C, 32-104°F
Precision of temperature measurement: 1°C, 2°F Temperature resolution 0.1°C
Operation temperature 0-35°C, 32-90°F Storage temperature: 0-50°C, 32-122°F
Dimension and weight: 185x59x45mm, 230g Power Supply: 1 battery 9v Alarm of Low Voltage



HRD-400 Digital refractometer 0-28%, for salinity

Measuring range: 0-28% Resolution: 0.1%
Automatic Temperature Compensation. Temperature range: 0-40°C,
32-104°F Precision of temperature measurement: 1°C, 2°F
Temperature resolution 0.1°C Operation temperature 0-35°C, 32-90°F
Storage temperature: 0-50°C, 32-122°F
Dimension and weight: 185x59x45mm, 230g Power Supply: 1 battery 9v



HRD-500 Digital refractometer, for urine, serum and DI

Measuring range: Urine SP.G 1.000-1.050, Serum P. 0-12g/dl,
Refractive Index 1.3330-1.3900 Resolution: Urine SP.G 0.001, Serum P. 0.1g/dl,
Refractive Index 0.0001 Automatic Temperature Compensation. Temperature range: 0-50°C, 32-122°F
Precision of temperature measurement: 1°C, 2°F Temperature resolution 0.1°C
Operation temperature 0-35°C, 32-90°F
Storage temperature: 0-50°C, 32-122°F
Dimension and weight: 185x59x45mm, 230g Power Supply: 1 battery 9v



Refractometers and polarimeters

2WAJ ABBE BENCH REFRACTOMETER

Main prism: horizontal Secondary prism: fitted on a hinge
Refraction index scale: Nd 1.300 – 1.700
Precision: Nd \pm 0.0003
Division: Nd 0.0005
Sugars scale: 0-95% from Nd 1.300 – 1.530
Precision: 0-50% = 0.2%; 51-95% = 0.1%
Division: 0,25%
Thermometer scale: 0°C - 70°C, div. 1°C
Weight: 4 Kg Size: 140 x 100 x 235 mm



POL-1 BENCH POLARIMETER

Circular polarimeter using Nicol prisms, with monochrome light source (589.3 Nm sodium bulb). Measurement range: \pm 180°
Precision: 0.05% Division: 1°
Magnification: 3x Eyepiece: with fine focusing
Stabilisation time: 5 mins. approx.
Polarimeter tubes: 100 mm and 200 mm
Size: 510 x 135 x 380 mm Power supply: 230V/50Hz, 30W
Replacement parts for POL-1 polarimeter:

- POL-1.1 Sodium bulb
- POL-1.2 100 mm polarimeter tube
- POL-1.3 200 mm polarimeter tube

