



NEW PRODUCTS!

On the following pages you will find products from the anatomy range, simulators, and for the first time ORTHObones, all for training and medical engineering.

Amongst them, there are some recently developed products, which come up to the usual tried and tested 3B Scientific® quality standards. The publication of this brochure marks the availability of these products. Inspired by close collaboration with our customers and backed up by recognised specialists, we have come up with teaching and training tools of extraordinary value in our development laboratory. Our classic products have also benefited! The entire skeleton series and our muscle figures now come on a new and improved, high-quality, stable metal stand with 5 castors.

We look forward to hearing from you!

Miles Sprott
Vice President, Medical



QUALITY STANDARDS

At 3B Scientific®, you will get great quality at fair prices. Our quality management is of a very high standard and meets ISO 9001 standards. It complies with the Worlddidac Quality Charter and is regularly checked by independent experts.



LEGEND



Download

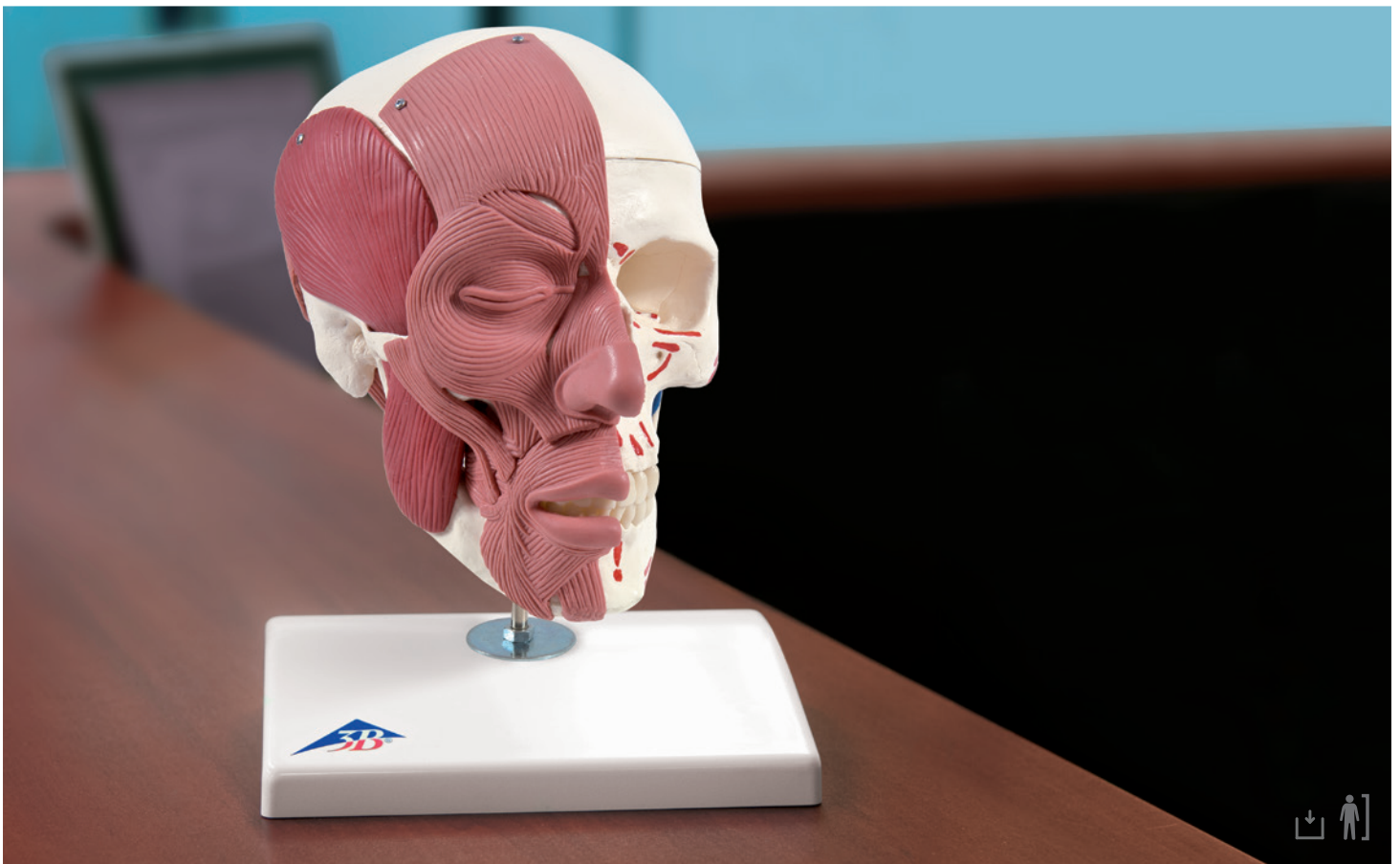
You can download product descriptions from our website.



Life-size

▶ For more information about our products, and to watch our product videos, visit us at 3bscientific.com! ◀





Skull with Facial Muscles

The face and mastication muscles are illustrated on the right half of this skull model. The face musculature can easily and precisely be differentiated from the mastication musculature by the two different colour materials used. On the left half the muscle origins and insertions are marked with colours (origin: red, insertion: blue). The jaw is movable and due to the flexible musculature the rudimentary chewing motion can be demonstrated. Cranium and m. masseter are detachable.

9942-A300



¾ Life-Size Dual-Sex Muscle Figure, 45-part

The finest teaching tool available! Standing over 138 cm tall, this ¾ life size human replica depicts deep and superficial musculature as well as the body's major nerves, vessels, tissues and organs in exquisite detail. The internal organs are removable (45 pieces in all) to reveal the fundamental inter-relationships of human morphology. Remove the calvarium to view the 3-part removable brain. Look beneath the liver to reveal the gall bladder and bile duct. Peer inside the appendix, stomach, lungs, heart or kidney. Remove and view the details of 13 different muscles of the arms and legs. This dual sex version has interchangeable genital inserts and a female mammary gland as well as a detailed multilingual key card identifying over 600 hand numbered structures. Hand painted in realistic colours and mounted on a convenient roller base. Includes the following features:

- 5 arm / shoulder muscles
- 8 leg / hip muscles
- 2 part removable heart
- 5 part head including removable brain
- 2 part removable lungs
- 2 part stomach
- Removable 4 part male and 2 part female genital inserts
- Detachable arms, leg, head, and abdominal wall for detailed study

9942-B50

¾ Life-Size Female Muscle Figure, 23-part

This Female Muscle Figure provides the same quality characteristics as the model 9942-B50 above but is delivered without internal organs, brain, and male genitalia providing for unobstructed study of the human musculature. Extra shipping charges may apply.

9942-B51

NEW

Metal Stand with
5 Casters!



Stan the 3B Scientific® Classic Skeleton, A10

Stan, the standard model of a human skeleton, has been appreciated throughout the world for decades. Thanks to its very high quality and robust construction, it is perfect for use in hospitals, schools, universities and laboratories. So choose Stan, the original among artificial skeletons. Now available on a stable metal stand with 5 casters! Comes with metal stand and transparent dust cover.

The other advantages of the 3B Scientific® skeleton are:

- Exceptional value for money
- 3 year guarantee
- Top quality natural casting "Made in Germany"
- Final assembly carried out by hand
- Made from a durable, unbreakable synthetic material
- On a stable metal stand with 5 casters (painted white)
- Close to the realistic weight of around 200 bones
- Natural skeleton size
- 3 part assembled skull
- Individually inserted teeth
- Limbs can be removed quickly and easily

9942-A10

Proven quality - even more stable!



Fred the Flexible Skeleton, A15

Introducing Fred, the flexible skeleton. Fred's spine can bend to mimic any natural human movement. Once flexed, it remains fixed in position to demonstrate correct and incorrect posture or various pathological conditions. In addition, all skull movements can be demonstrated. Spinal nerve exits and vertebral arteries are shown as well as a dorso-lateral disc prolapse between the 3rd and 4th lumbar vertebrae. Fred has all the standard benefits of a 3B Scientific® skeleton. Now available on a stable stand with 5 casters!

9942-A15

Completely flexible!



Metal Stand with 5 Casters

This metal stand base features extraordinary stability and durability. The 5 large casters ensure that the stand is stable and easy to handle. The base is compatible with all 3B skeletons and the 3B muscle figures 9942-B50 and 9942-B51. Make sure you have a secure stand for your current skeleton and upgrade this metal stand base easily and quickly.

9942-XA031



More details about our products available at
3bscientific.com!

Bestseller

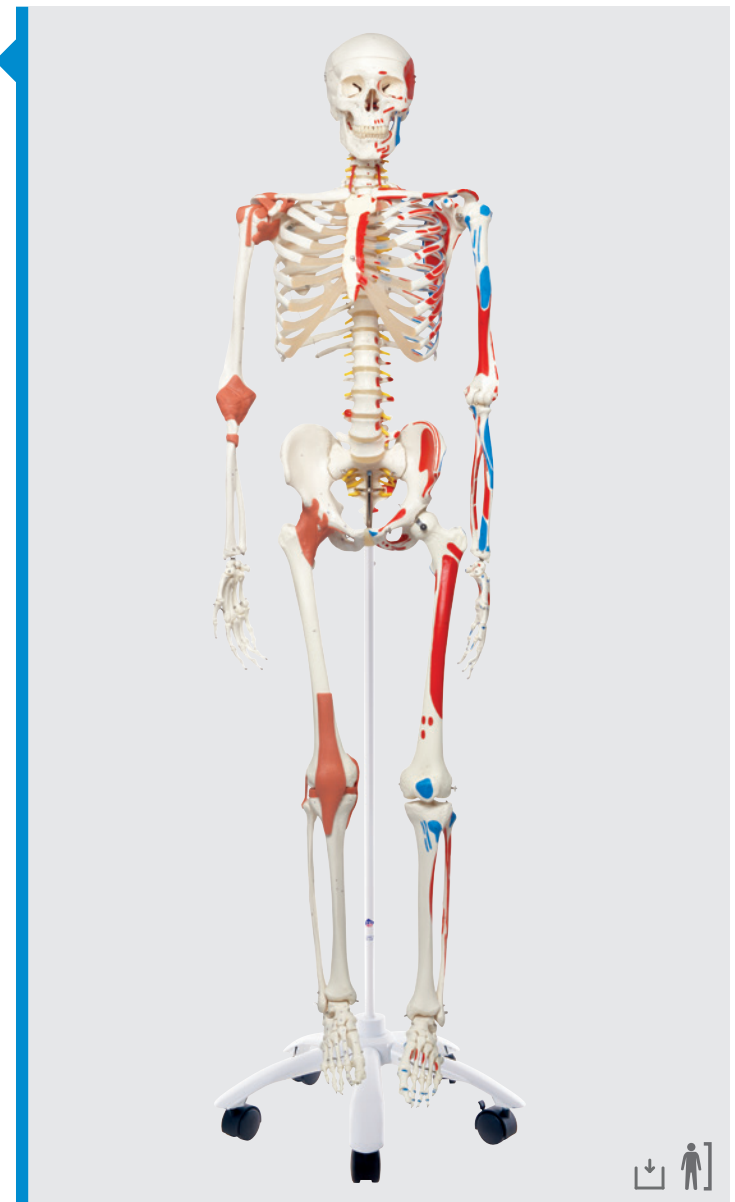
Sam the Skeleton, A13

Sam offers all the advantages of a 3B Scientific® skeleton. With Sam, you can also demonstrate the movements of the skull via the head joints, and thanks to the fully flexible spine, you can adjust the model to place it in natural body postures. The unique combination of muscle origins and insertions, the numbered bones, flexible ligaments and flexible spine with a slipped disc between the 3rd and 4th lumbar vertebrae clearly show the medical and anatomical interest of this top model's more than 600 structures. Now available on a stable metal stand with 5 casters! Comes with metal stand and transparent dust cover.

An overview of Sam's advantages:

- Over 600 hand-numbered, labeled details
- Hand-painted muscle origins and insertions
- Flexible spine and ligaments
- Slipped disc between the 3rd and 4th lumbar vertebrae
- Protruding spinal nerves and vertebral arteries
- 3-part assembled skull with individually inserted teeth
- Made from a durable, unbreakable synthetic material
- Top quality, life size natural casting "Made in Germany"
- Close to the realistic weight of around 200 bones
- Final assembly carried out by hand
- On a stable metal stand with 5 casters (painted white)
- Exceptional value for money with a 3 year guarantee
- Easy to remove limbs

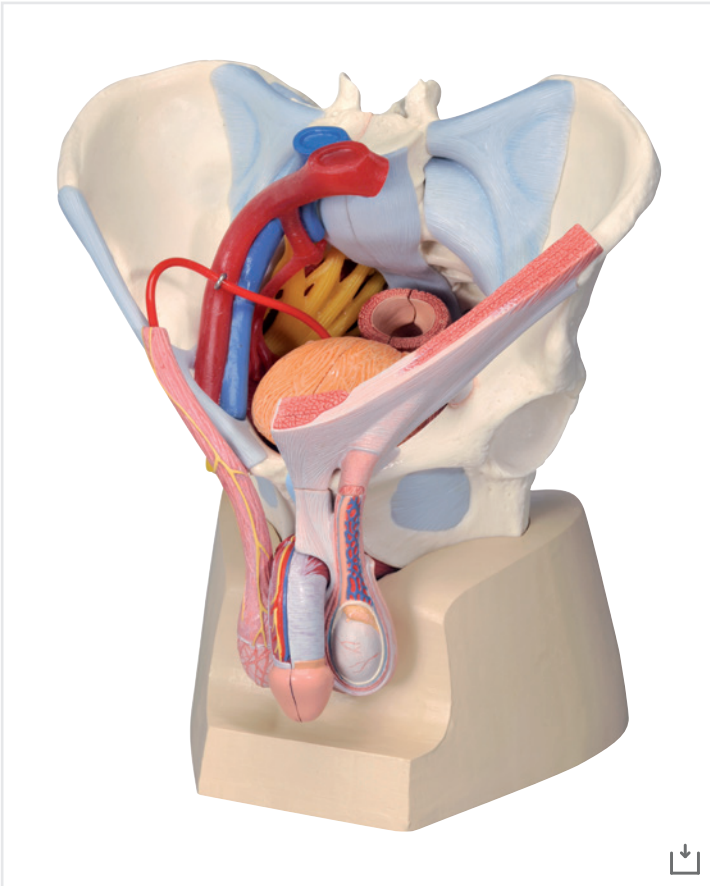
9942-A13



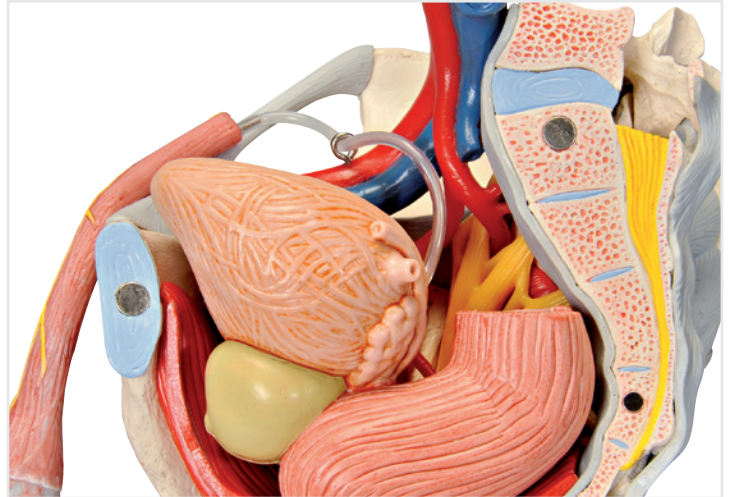
OVERVIEW OF ALL SKELETON MODELS & THEIR FEATURES

Model	Item No.
A10	9942-A10
A10/1	9942-A10/1
A11	9942-A11
A11/1	9942-A11/1
A12	9942-A12
A13	9942-A13
A13/1	9942-A13
A15	9942-A15
A15/3	9942-A15/3
A15/3S	9942-A15/3S

Model	A10	A10/1	A11	A11/1	A12	A13	A13/1	A15	A15/3	A15/3S
Top quality natural casting	●	●	●	●	●	●	●	●	●	●
Final assembly done by hand	●	●	●	●	●	●	●	●	●	●
Durable, unbreakable synthetic material	●	●	●	●	●	●	●	●	●	●
Natural skeleton size	●	●	●	●	●	●	●	●	●	●
Close to the actual weight of approx. 200 bones	●	●	●	●	●	●	●	●	●	●
3 part skull that can be taken apart	●	●	●	●	●	●	●	●	●	●
Rotating ulna and radius	●	●	●	●	●	●	●	●	●	●
Soft intervertebral discs	●	●	●	●	●	●	●	●	●	●
Metal stand with 5 castors	●		●		●	●		●		
Metal hanging stand with 5 castors		●		●			●		●	●
L3-L4 slipped disc							●	●	●	
Flexible spine							●	●	●	
Muscle insertions and origins, hand-painted			●	●		●	●			
Flexible ligaments					●	●	●			
Spinal nerves and vessels							●	●	●	
Numbered bones, fissures, foramina and processes			●	●		●	●			
Flexible assembly of all large joints									●	●
Natural movement of the shoulder and shoulder blades										●
Natural movement of the knee cap										●
Almost natural movement of the hip									●	●
Flexible assembly of the foot bones									●	
Flexible assembly of the xiphoid process									●	●



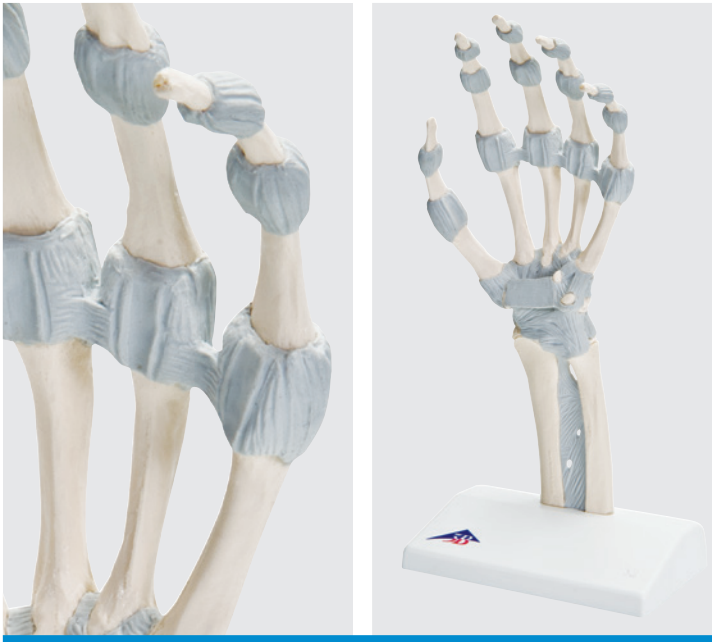
Male pelvis with ligaments, vessels, nerves, pelvic floor and organs, 7-parts
 This 7-part model of the male pelvis accurately shows how the bones, ligaments and pelvic floor muscles interact. This medianly divided model is connected with magnets to allow for easily separation into two halves. The right side of the pelvis shows the external anal sphincter, rectum, bladder, prostate and penis. Layers of skin have been removed from the penis and scrotum so vessels, nerves and internal structures are visible. Over 120 structures are identified. Comes with sturdy base for display.
 9942-H21/3



Male Pelvis, 3-part
 This 3-part model is a natural cast of a male, bone pelvis. It shows all anatomical structures in detail: both hip bones, pubic symphysis, sacrum and coccyx as well as the fifth lumbar vertebra with intervertebral disc. A median section has been placed through the fifth lumbar vertebra, the sacrum and the coccyx, so that the pelvis, which is held together by practical magnets, can be split into two halves. This means that part of the cauda equina is also visible in the vertebral canal. The left half of the fifth lumbar vertebra is held together by magnets and can also be removed.
 9942-H21/1



Male Pelvis with Ligaments, 2-part
 This model is a natural cast of a male, bone pelvis. It shows all anatomical structures in detail: both hip bones, pubic symphysis, sacrum and coccyx as well as the fifth lumbar vertebra with intervertebral disc. A median section has been placed through the fifth lumbar vertebra, the sacrum and the coccyx, so that the pelvis, which is connected by practical magnets, can be split easily into two halves. This means that part of the cauda equina is also visible in the vertebral canal.
 9942-H21/2

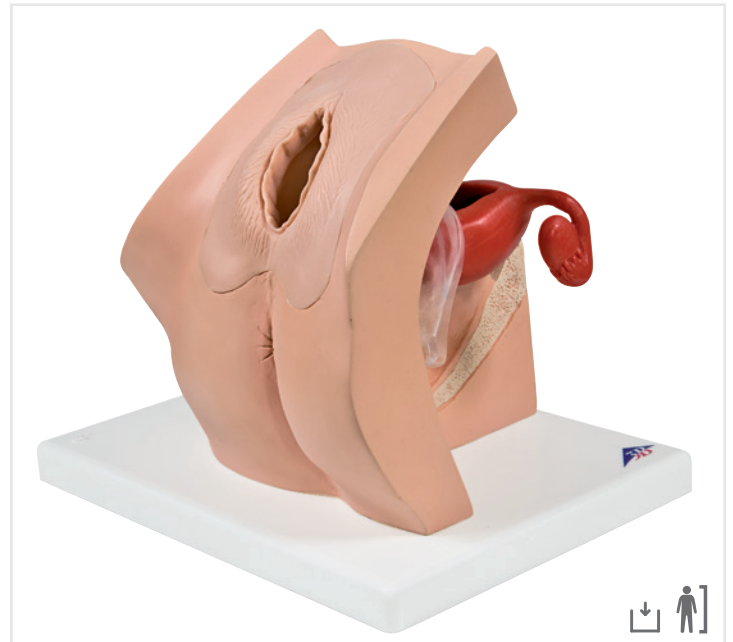


NEW

Hand with Ligaments

This single-part model shows the anatomy of the ligaments in the hand in detail. It is ideally suited both as a teaching aid as well as for anatomy classes, such as for medical students, physiotherapists and occupational therapists. The carpals (ossa carpi), the metacarpals (ossa metacarpi) and finger bones (ossa digitorum manus) are shown as osseous structures. In the distal area of the forearm, the radius and the ulna are represented.

9942-M36



Model for Gynecological Patient Education

Ideal for demonstration purposes and for practicing insertion of female barrier contraceptive devices. Including the femidom, cervical cap, vaginal ring, diaphragm and IUD. It is possible to insert the various types of pessaries such as ring, bowl or cube which are used in the event of a prolapse or incontinence.

9942-P53

Recommended Kits

Contraception Kit

9942-XP53-001

Pessary Kit

9942-XP53-002

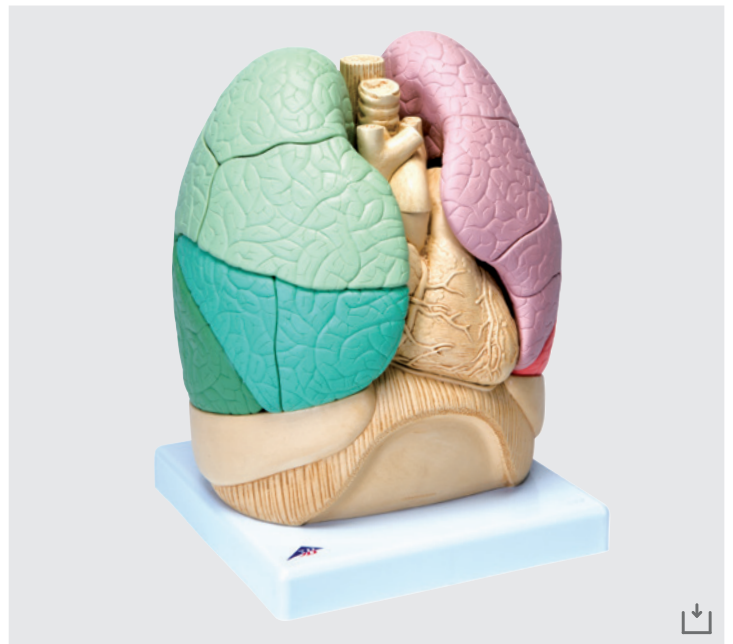


Pathological Eye - Enlarged 5 Times

This model shows an eye enlarged by a factor of 5, which may be used for patient education. The easy to use switchable and didactically simplified representations of the retina and lens, make it possible to explain clearly to the patient the typical changes that occur in a healthy eye due to the following diseases:

- Subcapsular cortical and nuclear cataract
- Diabetic and Hypertensive retinopathy
- Papillary changes of glaucoma
- Age-related macular degeneration
- Papilloedema
- Central retinal arterial occlusion and venous occlusion
- Rhegmatogenous retinal detachment

9942-F17



Segmented Lung

This high quality lung model is detachable into two lobes and single segments. The segments are colour coded and their position can be easily identified in the bronchial tree. The bronchial tree contains the lobar bronchi and segmental bronchi.

All segments are connected by magnets which allow a safe and easy handling.

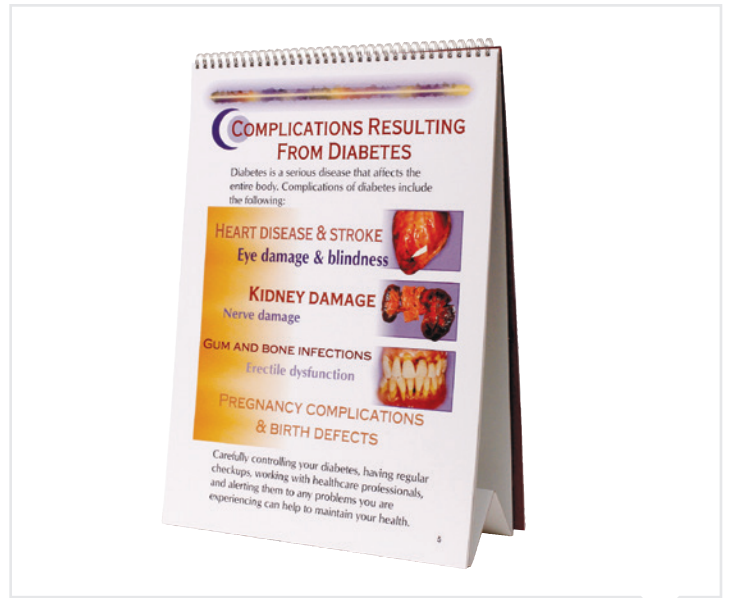
9942-G70



Complete MyPlate Kit

This kit combines five plates, the display rack, and the food kit for your complete MyPlate educational teaching kit. The 42-piece food kit includes grains, protein, fruit and vegetables. See online for full product list.

9942-W44791K



Diabetes Flip Chart

This flip chart explains type 1, type 2, and gestational diabetes as well as the risk factors and warning signs of each one. Information on pre-diabetes, testing, complications resulting from diabetes, and managing diabetes is also included. Features presenter's notes on reverse panels. Flip Chart is 6 panels. Available in English only.

9942-W43212



Vat of Fat

Explaining how calorie intake translates into weight gain is simplified with this graphic and informative display. The plastic jar contains approx. 1 lb. of goeey simulated fat, which represents the amount of weight a person could gain in one week by consuming an extra 500 calories each day. Information on the back of the jar shows how much weight a person could gain in one year as a result of excess calories.

9942-W43217



Occluded Artery Model

The potentially deadly effects of high cholesterol are demonstrated with this persuasive model. The tube represents an artery constricted by plaque, which forms on artery walls when there is excess cholesterol in the blood. When the model is turned over, the blood in the artery slows or stops completely.

9942-W43206



Baby Bottle Tooth Decay Model

Cast from a child's mouth, this hinged model shows that the sugars that coat a baby's mouth while sleeping with a bottle can cause dental disease. Comes with a coordinating tear pad. The 8.5 x 11" tear pad is English on one side and Spanish on the other and has 100 sheets per pad.

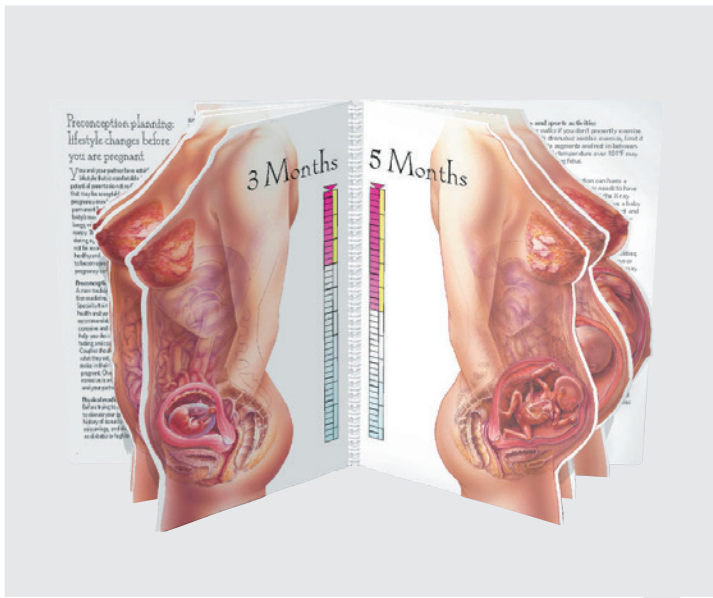
9942-W43157



Progression of Baby Bottle Tooth Decay Display

This model serves as a graphic reminder to parents of the damaging tooth decay that can occur if a baby or young child is put to bed with a bottle of juice, breastmilk, formula, or any other liquid containing sugar. Mounted on plastic base.

9942-W43141



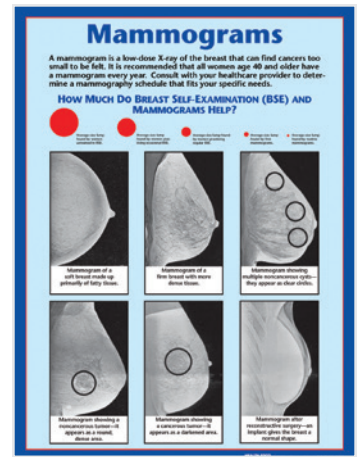
Life in the Womb: "With Child" Display

Reviewing anatomical development from conception to six weeks postpartum is made easy with the accompanying "With Child" life-size display. Available in English only. 9942-W43076



How to Perform Breast Self Examination (BSE) Chart

This chart explains basic procedures for vertical/grid, circular, and wedge patterns and includes recommendations on when and where to perform BSE. Also lists possible warning signs of breast cancer. An excellent teaching resource. Laminated. Available in English only. 9942-W43224



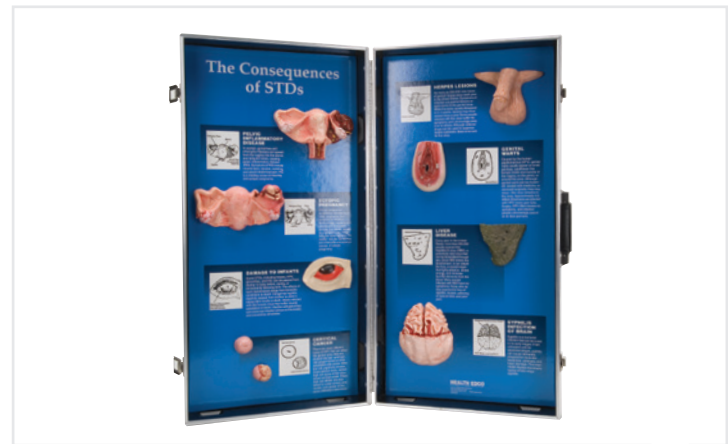
Mammograms Chart

A mammogram is a low-dose breast X-ray that can find cancers too small to be felt. It is recommended that all women age 40 and older have a mammogram every year. Consult with your healthcare provider to determine a mammography schedule that fits your specific needs. Available in English only. 9942-W43223



The Consequences of HIV/AIDS 3D Display

This 3D display helps viewers to understand what HIV/AIDS can do to the body. Contained within a convenient carrying case for storage or transport. Available in English only. 9942-W43090



The Consequences of STDs 3D Display

This 3D display shows how organs and body parts can be affected by sexually transmitted diseases. The durable carrying case and easy set-up make this display ideal for clinics and sex education programs. Available in English only. 9942-W43089



Consequences of High Blood Pressure Display

Life-size, three-dimensional, hand-painted models illustrate the various organs that can be affected by high blood pressure. Great for health fairs and health-education promotions. Contained in a convenient, sturdy wooden carrying case. Available in English only. 9942-W43081



Consequences of an Inactive Lifestyle Display

This 3D display graphically shows many of the negative health consequences of an inactive lifestyle. Each permanently mounted, handpainted model has a brief description of the consequences it represents. Display is contained within its own sturdy carrying case. Available in English only. 9942-W43147

3B Scientific® ORTHO**bones**

15%
OFF your first
ORTHO**bones** order!



Throughout the world, surgeons and medical engineers are taking advantage of the recently developed 3B Scientific® ORTHObones.

3B Scientific® ORTHObones are formed from originals and are therefore anatomically correct. The shape and physical qualities are like those of a genuine human bone.

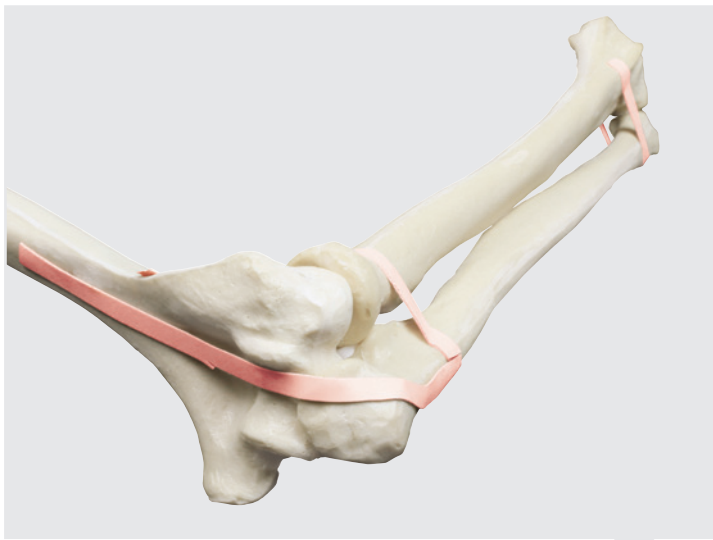
The excellent mechanical characteristics and the exact anatomical details are the most amazing features of 3B Scientific® ORTHObones. The key to their impressive similarity to real bones lies in the multi-layered construction of cortical and cancellous bone and the innovative production process.

3B Scientific® ORTHObones are made from a special mixture of plastics that enable the use of imaging procedures, such as x-rays, without any pre-processing of the material.

3B Scientific® ORTHObones are suitable for practicing a very wide range of osteosynthetic procedures and deepening knowledge of them. Screws can be secured to the rigid cortical bone, and implants and plates can be used on it.

- High quality product
- Formed from an original ensuring anatomical accuracy
- High contrast x-rays possible
- Better training results thanks to the product's mechanical features
- Dual component composition: cortical and cancellous bone
- Excellent value for money

We will be pleased to send you a free sample with no postage costs. You can obtain further information from our customer service department.



Elbow with Latex Band
9942-W19141



Knee
Left Knee 9942-W19146
Right Knee 9942-W19147



Wrist
Left Wrist 9942-W19143



Femur
Right Femur 9942-W19121
Left Femur 9942-W19128



Humerus
Right Humerus 9942-W19125
Left Humerus 9942-W19130



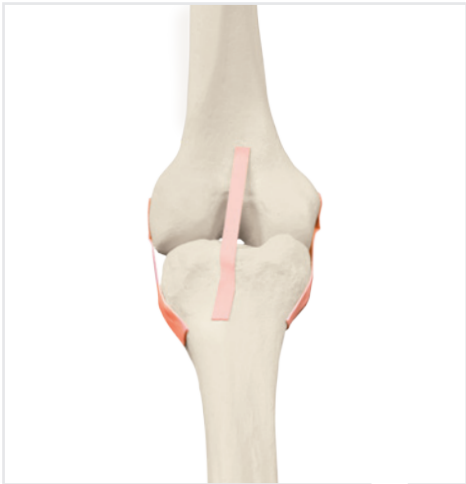
Full Spine
9942-W19137



Cervical Vertebra
9942-W19138



Cervical Vertebra with Occipital Bone
9942-W19139



Knee Joint with Ligaments
9942-W19144



Hand
9942-W19142



Foot with Hamertoes, Bunions & Heel
9942-W19145



Full Pelvis with Femurs
9942-W19148



Full Male Pelvis
9942-1018096

Other available 3B Scientific® ORTHObones:

Tibia: *featured on page 10 (top-left)*

Right Tibia 9942-W19122

Left Tibia 9942-W19129

Ulna:

Right Ulna 9942-W19127

Left Ulna 9942-W19132

Radius:

Right Radius 9942-W19126

Left Radius 9942-W19131

Pelvis with Femur:

Left Pelvis 9942-W19149

Right Pelvis 9942-W19150

Vertebra:

Thoracic Vertebra 9942-W19140

3B Scientific® CPRLilly PRO™



CPRLillyPro™

The best choice for your professional CPR training courses. All the relevant parameters can be monitored comfortably and easily via the tablet provided. Trainers and trainees will very quickly attain the chosen training target via the direct feedback feature. The face masks can be changed, and are easy to clean. The software can control the carotid pulse and the eye movements.

CPRLillyPro™ can react by opening the eyes when spoken to by the trainee. The correct head tilt, individual carotid pulse, and the moveable jaw to use the jaw thrust manoeuvre, provide realistic scenarios. CPR training with the CPRLillyPro™ complies with the latest AHA and ERC guidelines.

Displayed training parameters:

- Compression depth
- Compression frequency
- Hand position
- Head tilt
- Respiration volume/speed (combined)
- Respiration pressure

Light Skin 9942-P71

Dark Skin 9942-P71/1

CPRLilly™

Reliable for all CPR training courses. The CPRLilly™ is hygienic, and will operate economically for a long time thanks to the use of disposable airbags and the separate air chamber system.

The face masks can be changed, and are easy to clean. The carotid pulse and the eye movements can be controlled separately by hand. When the correct compression depth is reached, a tone will sound. CPRLilly™ can react by opening the eyes when spoken to by the trainee.

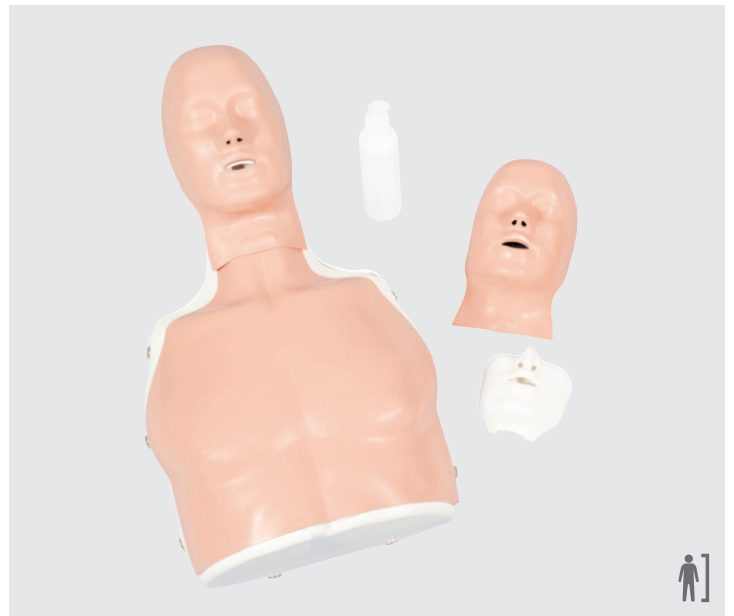
The correct head tilt, individual carotid pulse, and the moveable jaw to use the jaw thrust manoeuvre, provide realistic scenarios. CPR training with the CPRLilly™ complies with the latest AHA and ERC guidelines.

Light Skin 9942-P70

Dark Skin 9942-P70/1



3B Scientific® BASICBilly™



Basic Life Support BASICBilly™

BasicBilly™ CPR Manikin emerged by using the extensive results of studies focusing on the depth and force of compression during cardiopulmonary resuscitation (CPR). The BasicBilly™ CPR Manikin fulfills the latest guidelines from the AHA (American Heart Association) and ERC (European Resuscitation Council) on CPR and was designed with optimal force and compression values in mind.

With cardiac failure as one of the leading causes of death, let Basic Billy show that it is not difficult to provide help and save lives through correct cardiac massage and ventilation technique. BasicBilly™ is both anatomically correct and hygienic to use. The head is easy to tilt in order to open the airways for mouth-to-mouth and mouth-to-nose resuscitation. Additionally, the thorax raises as the lungs are ventilated. Mask ventilation is also possible and BasicBilly™ comes with 50 lung bags and 2 additional face masks for hygienic reasons. Low priced disposable airways and a convenient carrying case ensure hygienic and easy care of the manikin.

Even better, BasicBilly™ is actually two manikins in one as it can be used as either an adult or a child (of approximate age of 12). Just use the easy and interchangeable springs located in the back of the trainer to give the realistic depth feedback of either the adult (5cm) or child (4.5cm). Developed and manufactured in Germany.

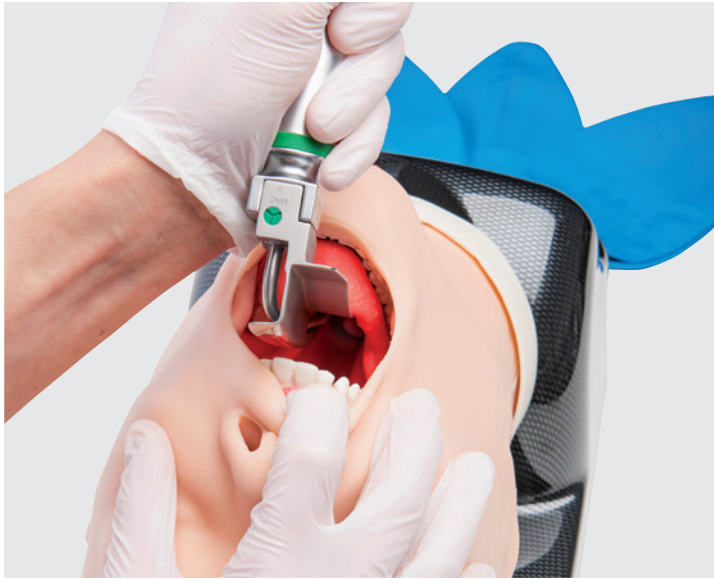
Includes:

- 1 BLS simulator (torso) with spring for cardiac massage of adults
- 1 additional spring for cardiac massage of children (approximate age of 12)
- 5 lung bags, adult
- 5 lung bags, child
- 1 additional face mask and inner head for hygienic artificial respiration
- Disinfectant solution

Light Skin 9942-P72

Dark Skin 9942-P72

▶ For more information visit us at 3bscientific.com ◀



AirSim Advanced Model

The AirSim Advanced Model features the uniquely constructed AirSim airway, designed to provide true, anatomically correct and visually accurate internal features.

The addition of a "real-feel" skin covering provides a more realistic bag mask ventilation training experience. AirSim Advanced features an improved neck design allowing for accurate articulation.

AirSim Advanced also features an anatomically accurate nasal passage, inflatable tongue to increase difficulty of airway and an option to include "breakout teeth" to simulate the effects of bad practice in laryngoscopy.

- AirSim Advanced 9942-W47404
- With Bronchial Tree 9942-W47404B
- With Breakout Incisor Teeth 9942-W47404T
- With Breakout Incisor Teeth & Bronchial Tree 9942-W47404TB



AirSim Advanced Crico Model

AirSim Advanced Crico combines all the standard features of the AirSim Advanced product (M-1015527) with the addition of a simulated cricoid cartilage to facilitate training in both needle and surgical cricothyroidotomy procedures.

AirSim Advanced Crico is the solution for delivery of effective training in a comprehensive range of airway management procedures.

The Advanced Crico features the uniquely constructed AirSim airway designed to provide true, anatomically correct and visually accurate internal features, coupled with a real-feel skin covering.

- AirSim Advanced 9942-W47405
- With Bronchial Tree 9942-W47405B
- With Breakout Incisor Teeth 9942-W47405T
- With Breakout Incisor Teeth & Bronchial Tree 9942-W47405TB



AirSim Baby

True to its heritage, AirSim Baby has realistic anatomy and a clinical functionality that enables basic and advanced pediatric airway management.

AirSim Baby facilitates training in the use of bag/mask ventilation, supraglottic airway insertion and both naso and orotracheal intubation. In addition, it can be used with all current videolaryngoscopes.

Realistic airway allows for training in all aspects of infant airway management including positive pressure ventilation, insertion of laryngeal masks and endotracheal intubations (nasal and oral).

9942-W47406

More details about our products available at 3bscientific.com!



AirSim Standard Model

The AirSim Standard is uniquely constructed to allow realistic feedback during airway management procedures and provides true, anatomically correct and visually accurate internal features.

The novel neck construction allows the head to be moved and secured in a number of positions. This ranges from the standard "sniffing" position to more difficult scenarios.

The AirSim Standard also features an inflatable tongue with real-life size and texture. There is also an option to include "breakout" teeth to simulate the effects of bad practice in laryngoscopy.

AirSim Standard
9942-W47401

With Breakout Incisor Teeth
9942-W47401T



AirSim Multi Model

The AirSim Multi contains the key features of the AirSim Standard (W47401) with the addition of a nasal passage and a chin. The AirSim Multi facilitates training on nasal procedures as well as bag and mask ventilation techniques.

The nasal passage has been developed in a manner similar to the main airway. This gives the same anatomical realism and functionality, important landmarks such as the turbinates are clearly defined. In addition, the material used offers the same tactile feedback which is delivered with the main airway itself. There is also an option to include "breakout" teeth to simulate the effects of bad practice in laryngoscopy (see M-1015528).

AirSim Multi
9942-W47402

With Breakout Incisor Teeth
9942-W47402T



AirSim Bronchi Model

The AirSim Bronchi is the latest product addition to the AirSim family, providing anatomically correct detail down to the fourth generation bronchi.

The AirSim Bronchi provides exceptional detail in both internal and external features; made possible through a combination of cutting edge molding technology and carefully handcrafted processes.

AirSim Bronchi
9942-W47403

Nasal Passage & Needle Breakout Incisor Teeth
9942-W47403T



Truman Trauma

The Truman Trauma System offers an anatomically correct simulated human torso designed for trainees to practice several surgical procedures together with the renowned AirSim head for training the full range of airway management and resuscitation skills. The Truman Trauma System also allows the use of replaceable tissue sets that allow each learner a life-like & unique surgical experience.

- Chest tube insertion
- Needle Decompression of tension pneumothorax
- Cardio Pulmonary Resuscitation
- Needle and Surgical Cricothyroidotomy
- Airway Management Skills including OP and NP airway tube insertion, tracheal intubation, bag valve mask techniques, supraglottic airway insertion and ventilation
- Percutaneous Tracheostomy
- Identification of tracheal deviation and jugular vein distension which are warning signs attributed to tension pneumothorax

9942-W45207

Replacement Parts

Needle Decompression Inserts	9942-W45213
Larynx Piece	9942-W45212
Overlay Neck Skin	9942-W45211
Airway Sealing Tape	9942-W45210
Lubrication	9942-W45029
Black Carrying Case	9942-W45208



Resusci Anne Torso

The Resusci Anne® Q CPR® Torso is an adult CPR training manikin now improved for multiple feedback options that provide opportunity to focus on student competency. Resusci Anne® enables objective CPR performance and logging of sessions for post-training review.

Anne First Aid Torso with Carry Bag	9942-W19622
Resusci Anne Q CPR Torso with Carry Bag	9942-W19619
Q CPR Torso AED & Airway Head, with Carry Bag	9942-W19628
Q CPR Torso Defibrillation & Airway Head	9942-W19626

Additional Required Items

SkillGuide	9942-W19631
SkillReporter	9942-W19630

Resusci Anne Full Body

The Resusci Anne® Q CPR® Full Body is an adult CPR training manikin now improved for multiple feedback options that provide opportunity to focus on student competency. Resusci Anne® enables objective CPR performance and logging of sessions for post-training review.

First Aid Full Body with Trolley	9942-W19623
Resusci Anne Q CPR Full Body with Trolley	9942-W19624
Q CPR Full Body AED & Airway Head, with Trolley	9942-W19629
Q CPR Full Body Defibrillation & Airway Head	9942-W19627

Additional Required Items

SkillGuide	9942-W19631
SkillReporter	9942-W19630



SimPad® SkillReporter

When used with the AED and CPR-D models, you can control the heart rate and entire scenarios. This operates wirelessly too, of course. The easy-to-operate SimPad SkillReporter software offers a wide range of feedback for high quality CPR training. All important CPR data is measured. The software provides real-time feedback, saves data, and calculates the overall performance, thereby enabling a thorough debriefing.

9942-W19630



SkillGuide

SkillGuide is a feedback device designed to provide real-time and summative feedback on the quality of CPR performance. For use with Resusci Anne or Resusci Baby.

9942-W19631



HeartStart AED

Unique in its design, the HeartStart Trainer has been developed to train individuals on how to use the HeartStart Onsite and HeartStart Home Defibrillators.

- Eight CPR/AED pre-configured scenarios
- CPR coaching feature
- Offers step-by-step instructions for performing CPR, including compression-to-ventilation ratios and the length of each ventilation
- Simulates operation of the HeartStart Onsite or Home Defibrillators only

9942-W195001



Little Anne®, Family

Realistic, inexpensive, and lightweight adult CPR trainer with all the essential features for adult CPR learning.

Includes:

- Large Family Pack Bag on Wheels and one each of the following manikins:
- Little Anne manikin, 1 Training Mat, 2 Manikin Faces, 2 Little Anne Airways, 6 Manikin Wipes and User Guide
- Little Junior manikin, 1 Training Mat, 2 Manikin Faces, 2 Airways, 6 Manikin Wipes and User Guide
- Baby Anne manikin, 6 Airways, 10 Foreign Body Practice Objects and User Guide

Little Anne, Family 9942-W19378



Little Anne®

Realistic, inexpensive, and lightweight adult CPR trainer with all the essential features for adult CPR learning.

- Oral and nasal passages allow realistic nose pinch required for mouth-to-nose ventilation
- Natural obstruction of the airway allows students to learn the important technique of opening the airway
- Head tilt/chin lift and jaw thrust allow students to correctly practice all maneuvers necessary when resuscitating a real victim
- Realistic airway function means that the airway remains obstructed without proper head tilt/chin lift or jaw thrust. Chest rise is seen with correct ventilations

Little Anne	9942-W19376
Little Anne, Dark Skin	9942-W19653
Little Anne, 4-Pack	9942-W19625
Little Anne, 4-Pack, Dark Skin	9942-W19654



Little Anne®, AED

The Little Anne AED Training System is a complete product offering combining Little Anne AED manikin, AED Trainer 2 and remote control into one affordable CPR-D training package.

- The unique design feature of the AED Trainers is that proper pad placement on the patient's chest is required in order to advance in the scenario, meaning students receive quality CPR-D training. The remote control unit also gives the instructor unique control of the scenario.
- Educationally effective training with realistic anatomical landmarks
- The Little Anne® AED Training System system offers all the essential features necessary for learning adult CPR, defibrillation and defibrillator pad placement.

9942-W19625



AED Trainer 2

The Laerdal AED Trainer 2 offers an affordable alternative for educating the layperson and healthcare provider in the effective use of an automated external defibrillator.

- Educationally effective, offers all the essential features necessary for learning appropriate AED use and techniques
- Affordable training through the simulation of the HeartStart FR2 AED in appearance and operation
- Added instructor flexibility through unique control of the scenario selection by use of the remote control device
- Flexible configuration of the device through a scenario builder program that allows the additional creation of custom training scenarios

9942-1018143

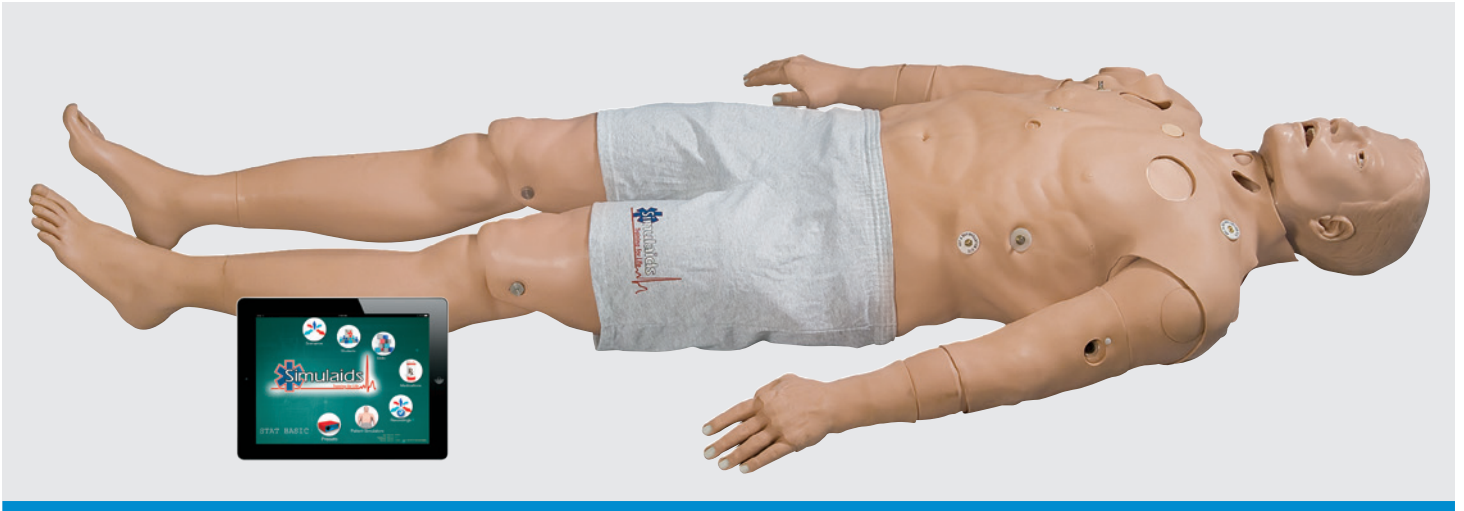


AED Trainer 3

The AED Trainer 3 is configured with eight real-world scenarios that have been developed in accordance with internationally recognized responder programmes. They are AHA and ERC 2010 Guideline compliant. Many parameters on each scenario can be easily configured to conform to local protocols or future Guideline updates. Language voice prompts can also be changed at a touch of a button.

The instructor can change scenarios by pressing the buttons on the device itself or by using an optional remote control. During each scenario, the remote control lets the instructor pause, change or introduce new challenges, to test how students respond to a variety of situations, enhancing the learning experience.

9942-1017517



SMART STAT

SMART STAT Basic includes both cardiac and lung sounds, two points thoracic decompression and two sites for chest drains, monitor blood pressure, spontaneous breathing with full airway management including cricothyrotomy and proper intubation placement, manage cardiac crisis with EKG and cardioversion, chest compressions, IV access, and drug therapy.

The new iPad® interface makes controlling, monitoring, and tracking student and group training even easier and effective with responsive controls and dynamic scenarios that are easy to manage with PDF-formatted report to make the most of limited training time. Student performance records can be transferred to a computer, and chronological scenario event logs can be printed.

Challenge your students with skill proficiency, knowledge demonstration, and critical thinking as you put them through belligerent crowds, anxious family members, dangerous environments, and any other true scenario training exercises imaginable with this simple to use, very portable patient simulator.

Basic 9942-W44173
With options 9942-W44174



SMART MOM

SMART MOM, an obstetrical trainer focused on the two primary challenges in OB deliveries, Postpartum Hemorrhage (PPH) and Shoulder Dystocia, also exhibits a wide range of other birthing irregularities. Extensive Fetal Heart Rate (FHR) programming ensures a broad exposure to variations in wave forms to test your practitioners' knowledge and team leadership skills in handling patient treatment modalities.

The handheld iPad® unit controls the birthing position and rotation of the fetus, descent speed, vaginal bleeding, amniotic fluid, meconium, and the mother's physiological condition in an easy-to-use application. Scenarios are included with the packages and an available library of scenarios makes physiologic changes to treatments simple and quick.

Features for the assessment of typical patient status include 10 continuously active pulse points, pupil response and size, blood pressure, heart and lung sounds, spontaneous respirations, and 5-lead monitoring capabilities with defibrillation and pacing.

9942-W44175

NOELLE® Birth Simulator with PEDI® Blue Neonate

This comprehensive teaching system combines the best of our patient care simulators with the Advanced Childbirth simulator. It is designed to provide a complete birthing experience before, during and after delivery.

- Intubatable airway with chest rise
- IV arm for meds/fluids
- Practice Leopold Maneuvers
- Automatic birthing system
- Measure head descent and cervical dilation
- Replaceable dilating cervixes
- Practice postpartum suturing on vulval inserts
- One articulating birthing baby with placenta
- One resuscitation baby with intubatable airway and umbilical catheter site
- New postpartum hemorrhage and palpation module

9942-W45177



Mama Natalie

Mama Natalie is a simulation tool kit to provide training for a normal or a complicated birth, as well as for the interaction between the trainee and the mother. The simulator is attached to the teacher who can manually control and manage the opening of the cervix, the foetal heart sounds, the position of the baby, the afterbirth, the amount of bleeding and the condition of the uterus.

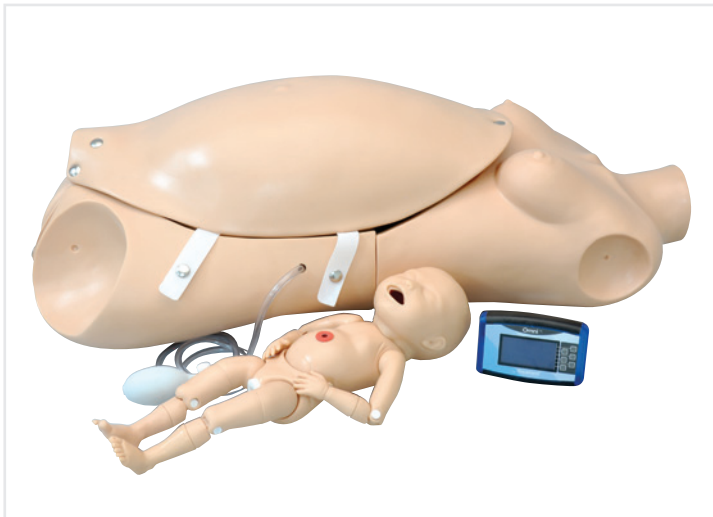
Light Skin 9942-W19537
 Dark Skin 9942-W19537D



NeoNatalie, 5-pack

NeoNatalie is an inflatable simulator designed to teach basic neonatal resuscitation skills. Developed to meet the key requirements for teaching the initial steps of resuscitation in the first ten minutes of a newborn's life, NeoNatalie is an effective, cost-efficient tool to enhance your training program.

9942-W19379



Maternal and Neonatal Birthing Torso

This comprehensive teaching system combines the best of our patient care simulators with the Advanced Childbirth simulator. It is designed to provide a complete birthing experience before, during and after delivery.

- Full size upper and lower female torso
- Removable stomach cover
- One articulating birthing baby with umbilical cord and placenta
- Automatic birthing system that rotates baby as it moves through the birth canal
- Measure head descent and cervical dilation
- Multiple placenta positions
- Replaceable dilating cervixes
- Practice postpartum suturing on vulval inserts
- Practice Leopold Maneuvers

9942-W45113



Life/form® Micro-Preemie Simulator

Nearly one out of every eight newborns arrive prematurely. To help you give your tiniest patients the best care possible, 3B Scientific is proud to introduce the Life/form® Micro-Preemie. This 25-week ELBW (Extremely Low Birth Weight) neonate is the smallest and most realistic pre-term infant available. Invaluable for training nurses and parents in care and handling techniques for babies that have had multiple medical interventions; the perfect team training aid for multiples or other high-risk delivery and transport scenarios. The baby can be ventilated and will accept a functional ET tube, NG tube, umbilical catheter, and IV line, as well as a non-functional chest tube and stomas. Detachable neural tube defect and omphalocele.

9942-W44754



LT Lap Tab trainer™

Technology meets simplicity with the Lap Tab trainer™ that works with your iPad, iPhone, tablet, or smartphone. No electricity required making it easy to practice or demonstrate lap skills anywhere! Developed in collaboration with Mr. Ali N. Bahsoun from Guy's and St. Thomas' Hospital, London, UK. The Lap Tab trainer™ is ideal for residents to take home and practice. Being our most portable trainer yet, the Lap Tab trainer™, folds up and is small enough to fit into a backpack and is simple to set up.

Trainer	9942-W44900
Trainer with Side Ports	9942-W44901
Trainer Package	9942-W44902
Trainer with Side Ports Package	9942-W44903
Trainer Messenger Bag	9942-W44904



T3 Series

The T3 Series is a complete minimally invasive training system that does not require video equipment. It's simple to set up and portable. The T3 Classic includes the original classic pelvic box + SimScope™ (camera) + 10" monitor. The pelvic box has 7 laparoscopic ports with interchangeable grommets (5 and 10mm) and interior lighting. The SimScope™ is conveniently mounted inside the trainer at an angle set to capture the activity in the work area and has a fixed view. A handle is located on the back of the box to provide easy portability. No assembly required. The T3 Series is designed to be used for a one-person laparoscopic suturing workstation.

T3 Classic	9942-W44905
T3 Joystick	9942-W44906
T3 Single-Site	9942-W44907



T5 Series

A complete minimally invasive training system that does not require video equipment, simple to set up and portable. It includes the large pelvic box + SimScope™ (camera) + 10" monitor. It is versatile because it can be used for basic laparoscopic skills up to advanced procedural training, including camera navigation for an individual or a team. Residents may practice on the T5 Large to acquire the skills incorporated into the FLS® modules. The large pelvic box has 14 laparoscopic ports with interchangeable grommets (5mm and 10 mm) and interior lighting.

T5 Large	9942-W44908
T5 Large RM	9942-W44909



T9 Series

Designed for Abdominal Intraoperative and Laparoscopic Ultrasound training. The extra large pelvic box has a slide-out drawer that houses the Abdominal Intraoperative and Laparoscopic Ultrasound Phantom "IOUSFAN" made by Kyoto Kagaku. The pelvic box has 7 laparoscopic ports that provide training and demonstration flexibility. The ports are fitted with grommets designed to hold the ultrasound wand (not included). The slide-out drawer provides easy access for inserting the Organs. A handle is located on the back of the trainer to provide easy portability.

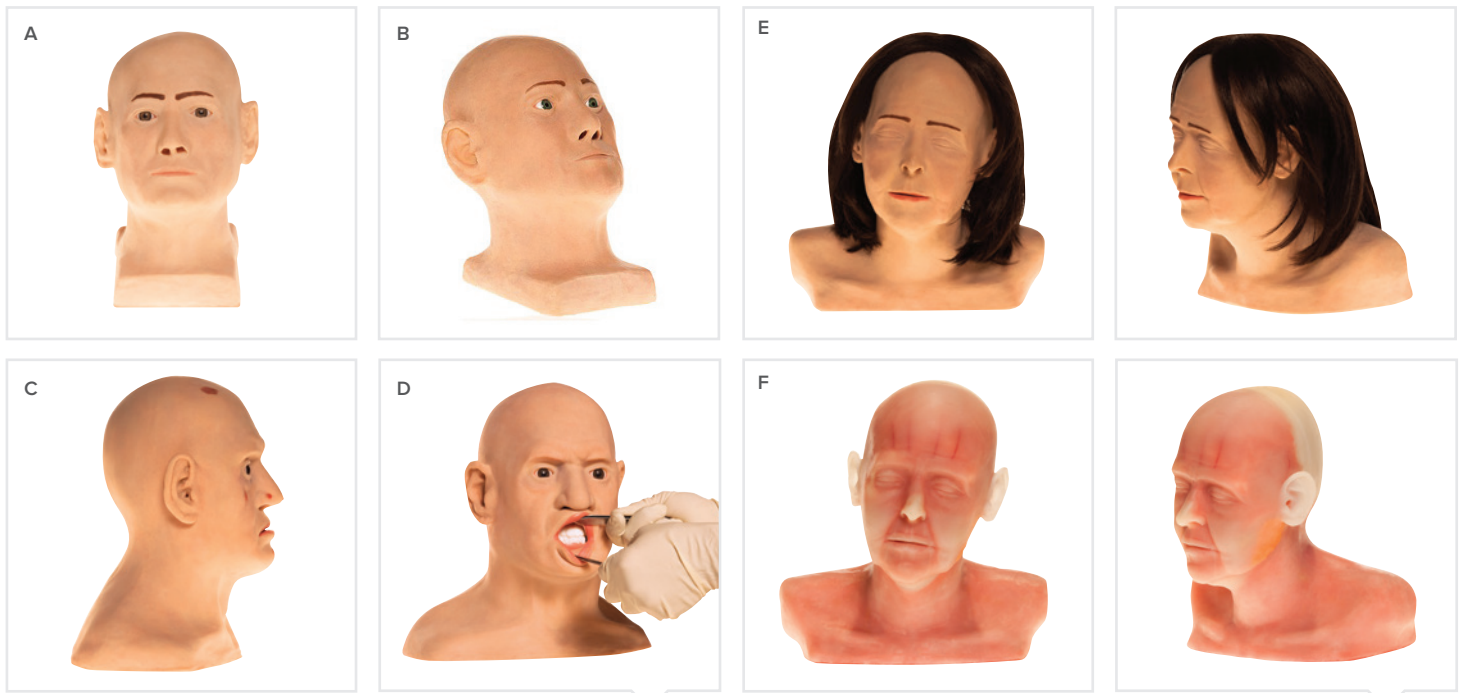
9942-W44910



T12 Series

A complete minimally invasive training system that does not require video equipment, simple to set up and portable. The T12 includes the new "belly shape" pelvic box + the new Advanced 0° SimScope™ (camera) + 19" monitor. It is versatile because it can be used for basic laparoscopic skills up to advanced procedural training, including camera navigation for an individual or a team. It has a 9.5 mm diameter shaft (220mm or 310mm) which fits like a real scope into trocars and ports, the focus is easily adjusted at the camera tip by rotating in or out. Available only in 120v Power.

T12	9942-W44911
T12 Soft	9942-W44912



Head Models

The Cosmo and II Duomo models are ideal for practicing advanced flaps and grafts in addition to basic suturing procedures. Additional procedures that can be performed with II Duomo with Tumors and Advanced II Duomo are: Tumor excision and scar revision, wedge resection of ear, pentagonal wedge eyelid and Estlander lip switch flap.

A. Cosmo	9942-W44943
B. II Duomo	9942-W44944
C. II Duomo with Tumors	9942-W44945
D. Advanced II Duomo	9942-W44946

Cosmetic Filler Models

The skin on the Zsa Zsa model is specially made to allow injections to be performed. Basic to advanced suturing procedures can also be performed on this model. The Diaphanous Zsa Zsa has specially crafted translucent skin which allows for the checking of filler placement.

E. ZSA	9942-W44947
F. Diaphanous ZSA Model	9942-W44948



Sclerotherapy Pad

The Sclero pad is used to practice injections. The vessels on this pad are heat sensitive and should be injected with hot water. When injected properly, the vessels disappear and reappear in about 30 seconds. The recommended temperature of the water is 87° Fahrenheit (hot tap water will work fine). We also recommend using a 30G 1/2" needle for the injections. To maximize the use of the pad, begin injecting towards the bottom of the pad and work your way up the vessels. The pad contains 6 vessels of different diameters (0.2 mm, 0.5 mm, 2 mm, 3 mm).

9942-W44950



Suture Pads

Realistic skin for basic suture training. The flat skin pad consists of an epidermis, dermis and subcutaneous layer and behaves as real skin when cut and sutured. The Garcia Pad simulates the thickness of facial skin. The Dali Pad is half-face and half-abdomen and finally the skin on the face portion is 2-3 mm thick and the skin on the abdomen portion is 3-4 mm thick.

Flat Pad	9942-W44940
Garcia Pad	9942-W44941
Dali Pad	9942-W44942



Breast Torso Model

The Breast-Torso Model is currently used to plan breast surgeries. Both basic and advanced suturing procedures can be performed on this model.

9942-W44949



Transparent Male & Female Catheter Models

This transparent model allows viewing and practice of the proper insertion, position, and inflation of a balloon catheter. When practicing catheter insertion, you will experience resistance and pressure as you would with an actual patient. Urine (water) actually flows when catheter is inserted properly. External genitalia is made of a special soft material to simulate real tissue. Comes with irrigator, irrigator stand, and case.

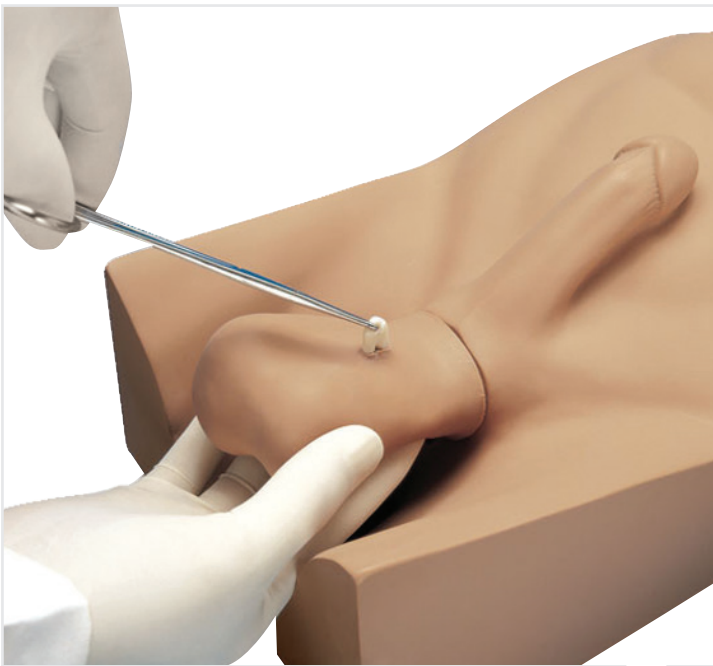
- Male Catheter Model 9942-W43028M
- Female Catheter Model 9942-W43028F



Circumcision Training Kits

Made with soft, life-like material, which is realistic to the touch. The trainers include the foreskin, glans penis, frenulum, meatus, and coronal groove. Practice separating foreskin from the glans, removal of the foreskin, and suturing techniques. The trainers have been designed for clamp methods, dorsal slit, and sleeve circumcisions.

- Infant Kit 9942-W66064IN
- Pre-teen Kit 9942-W66064PT
- Teen Kit 9942-W66064TN
- Young Adult Kit 9942-W44064YA



No Scalpel Vasectomy (NSV) Model

A compact simulator developed to assist in learning a new method of vas occlusion. To provide realism, the leg stumps are designed to "get in the way" of the student as the procedure is mastered. Includes two removable scrotal skin, two testicles, two long vas assemblies that can be advanced as needed for NSV exercises, and instructions for use.

9942-W19367



Male & Female Catheterization Set

Practice male and female urinary catheterization on these newly designed anatomically correct models. Training is enhanced by a new material that has a realistic feel and flexibility. Both models utilize a 16 FR catheter and can be used to demonstrate balloon inflation procedures. A fluid reservoir allows for urine output upon successful completion of the insertion procedure. Instructors are able to teach sterile technique for insertion and removal of the catheter, as well as practice preparing the patient for the procedure.

- Set 9942-W44789SET
- Male only 9942-W44789M
- Female only 9942-W44789F



NEW

Epidural & Spinal Anesthesia Simulator

This epidural and spinal injection trainer is very impressive thanks to its extremely realistic haptic and acoustic feedback, and the use of high-quality, hard-wearing materials.

Thanks to close cooperation with epidural anaesthesia specialists, incomparably realistic conditions could be recreated.

The light, compact structure can be used in a wide variety of ways. The device has low operating costs and is intuitive to use, ensuring lasting, high-level performance.

A summary of the device's main functions:

- Epidural anaesthesia using the loss-of-resistance and the hanging-drop technique
- Spinal anaesthesia with realistic resistance of the dura and arachnoid mater with or without a cannula
- Fluid-filled spinal canal with realistic outflow rate thanks to the ability to
- Adjust the excess pressure
- An epidural catheter can be inserted into the epidural space
- Closed water system
- Easy to clean

9942-P61

Replacement Parts

Skin 9942-XP61-001

LOR Insert 9942-XP61-002



EuroDidact®