



...going one step further

Neuro-Anatomical Brain, 8-part



C22

(1000228)

Latin

ENCEPHALON DEXTRUM

- A Cerebrum
- 1 Substantia alba
- 2 Cortex cerebri
- a Lobus frontalis
- b Lobus parietalis
- c Lobus occipitalis
- d Lobus temporalis
- e Insula
- C Truncus encephali
- D Cerebellum

Ve I./II. Ventriculus lateralis

Ve III. Ventriculus tertius

Ve IV. Ventriculus quartus

ENCEPHALON SINISTRUM

- B Hypophysis

Areae corticales (BRODMANN):

- 1 Area gigantoganglionaris (Area 4)
- 2 Area postcentralis granulosa et paragrulosa (Area 3, 1 et 2)
- 3 Pars opercularis at pars triangularis (Area 44 et 45)
- 4 Area temporalis granulosa (Area 41) et Area temporalis paragrulosa (Area 42)
- 5 Area temporalis superior (Area 22)
- 6 Area striata (Area 17)

- E Cingulum et hippocampus

NERVI CRANIALES

- I. N. olfactorius [I]
- II. N. opticus [II]
- III. N. oculomotorius [III]
- IV. N. trochlearis [IV]
- V. N. trigeminus [V]
- VI. N. abducens [VI]
- VII. N. facialis [VII]
- VIII. N. vestibulocochlearis [VIII]
- IX. N. glossopharyngeus [IX]
- X. N. vagus [X]
- XI. N. accessorius [XI]
- XII. N. hypoglossus [XII]

Neuro-Anatomical Brain, 8-part

English

RIGHT HALF of BRAIN

- A Cerebrum
- 1 White substance
- 2 Cerebral cortex
- a Frontal lobe
- b Parietal lobe
- c Occipital lobe
- d Temporal lobe
- e Insula
- C Brainstem
- D Cerebellum

- Ve I./II. Lateral ventricle
- Ve III. Third ventricle
- Ve IV. Fourth ventricle

LEFT HALF of BRAIN

- B Pituitary gland

Cortical areas (BRODMAN areas):

- 1 Primary motor cortex (area 4)
 - 2 Primary somatosensory cortex (areas 3,1 and 2)
 - 3 Motor speech center (BROCA area, area 44 and 45)
 - 4 Auditory cortex (area 41 and 42)
 - 5 Area 22 with sensory speech center (WERNICKE area) in the caudal part
 - 6 Primay visual cortex (area 17)
- E Limbic System

CRANIAL NERVES

- I. Olfactory nerve [I]
- II. Optic nerve [II]
- III. Oculomotor nerve [III]
- IV. Trochlear nerve [IV]
- V. Trigeminal nerve [V]
- VI. Abducent nerve [VI]
- VII. Facial nerve [VII]
- VIII. Vestibulocochlear nerve [VIII]
- IX. Glossopharyngeal nerve [IX]
- X. Vagus nerve [X]
- XI. Accessory nerve [XI]
- XII. Hypoglossal nerve [XII]

RECHTE GEHIRNHÄLFTE

- A Großhirn
- 1 Weiße Substanz
- 2 Großhirnrinde
- a Stirnlappen
- b Scheitellappen
- c Hinterhauptlappen
- d Schläfenlappen
- e Insel
- C Hirnstamm
- D Kleinhirn

Ve I./II. Seitenventrikel

Ve III. III. Ventrikel

Ve IV. IV. Ventrikel

LINKE GEHIRNHÄLFTE

- B Hirnanhangsdrüse

Rindfelder (BRODMANN-Areale):

- 1 Primäres motorisches Rindfeld (Area 4)
- 2 Primär somatosensorisches Rindfeld (Areale 3, 1 und 2)
- 3 Motorisches Sprachzentrum (BROCA, Area 44 und 45)
- 4 Primäre und sekundäre Hörrinde (Area 41 und 42)
- 5 Area 22 mit sensorischem Sprachzentrum (WERNICKE) im hinteren Anteil
- 6 Primäre Sehrinde (Area 17)

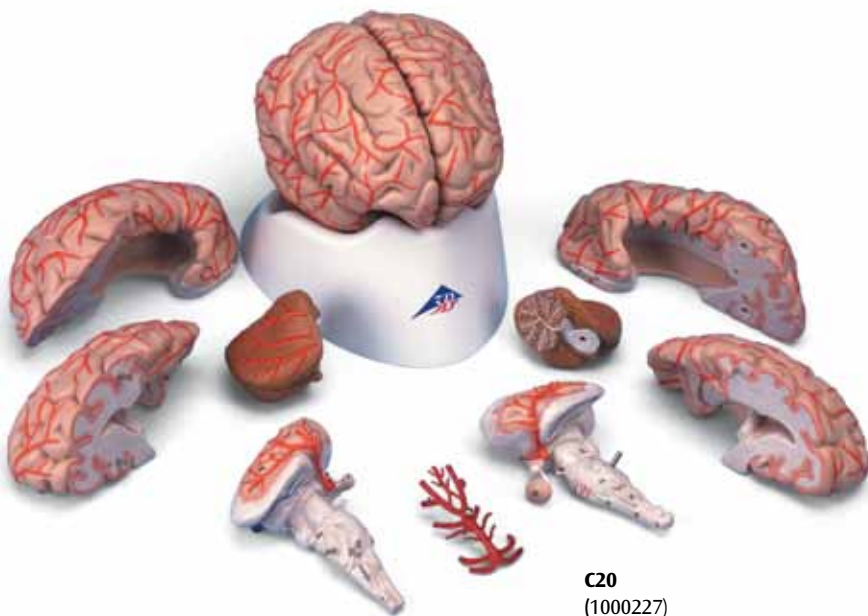
- E Limbisches System

HIRNNERVEN

- I. Riechnerv [I]
- II. Sehnerv [II]
- III. Hirnnerv [III]
- IV. Hirnnerv [IV]
- V. Dreigeteilter Nerv [V]
- VI. Hirnnerv [VI]
- VII. Gesichtsnerv [VII]
- VIII. Gleichgewicht-Hör-Nerv [VIII]
- IX. Zungen-Rachen-Nerv [IX]
- X. Lungen-Magen-Nerv [X]
- XI. Beinerv [XI]
- XII. Hirnnerv [XII]

Also available from 3B Scientific®:
C20 Brain with Arteries, 9-part

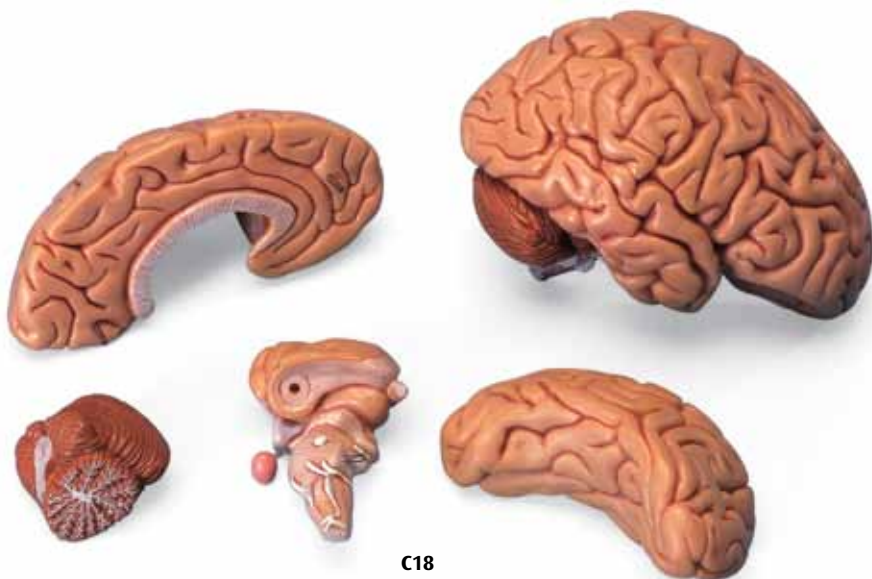
Ebenfalls bei 3B Scientific® erhältlich:
C20 Gehirn mit Arterien, 9-teilig



C20
(1000227)

Also available from 3B Scientific®:
C18 Classic Brain, 5-part

Ebenfalls bei 3B Scientific® erhältlich:
C18 Klassik-Gehirn, 5-teilig



C18
(1000226)